

*Pattern Design Guides by Don McCunn***Dressing Gown**

These instructions show how to create a Dressing Gown from the basic fitted slopers.

The instructions have been prepared for Don McCunn's online class "How to Make a Sleeve Sloper."

(rev: 4/18/2009)

Copyright © 2009 by Donald H. McCunn

- You may copy this Pattern Design Guide for your own individual use.
- You may not distribute or sell copies of the instructions to others including friends, club members, students, or clients.
- You may sell garments made using these instructions without any restrictions.

Design Enterprises of San Francisco

1007 Castro Street, San Francisco, CA 94114

(415) 282-8813 || Website: Patternmaking-Classes.com

Yahoo Groups: <http://groups.yahoo.com/group/How-to-Make-Sewing-Patterns>

<http://groups.yahoo.com/group/Patternmaking-Classes>

Dressing Gown

by Don McCunn

Contents

Creating the Patterns	2
Sewing Instructions	4

The Design for a Dressing Gown from the Slopers

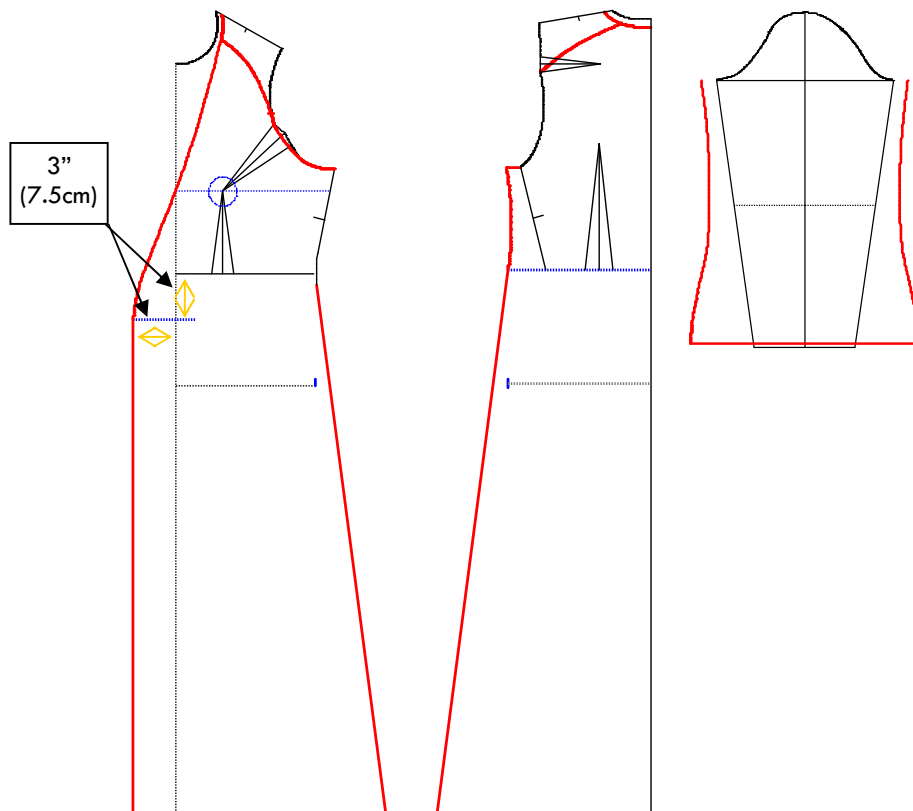
The patterns for the Dressing Gown demonstrate how to create a raglan sleeve. This sleeve uses a dart at the shoulder to create a fitted sleeve that does not have a seam running over the top of the shoulder. The seam lines that join the sleeve to the body of the garment are a design choice but should join the armscye about where the sleeve starts to go under the arm. It was originally designed for Lord Raglan after he lost an arm in the Charge of the Light Brigade in 1854.

For this example I have also selected to show how the bodice can be extended to create a full length robe. I made it 3" shorter than Alex's waist-to-ankle length. The hem is 150% of the waist measurement.

The Dressing Gown is designed to be a loose fitting garment so there are no darts. The front edge of the garment is extended out 3" from center front for a comfortable wrap around effect. I used the Waist-to-Hip and 1/4 of the Hip measurements to verify the garment was not too close fitting around the hips. The sleeve is also design to be loose fitting.

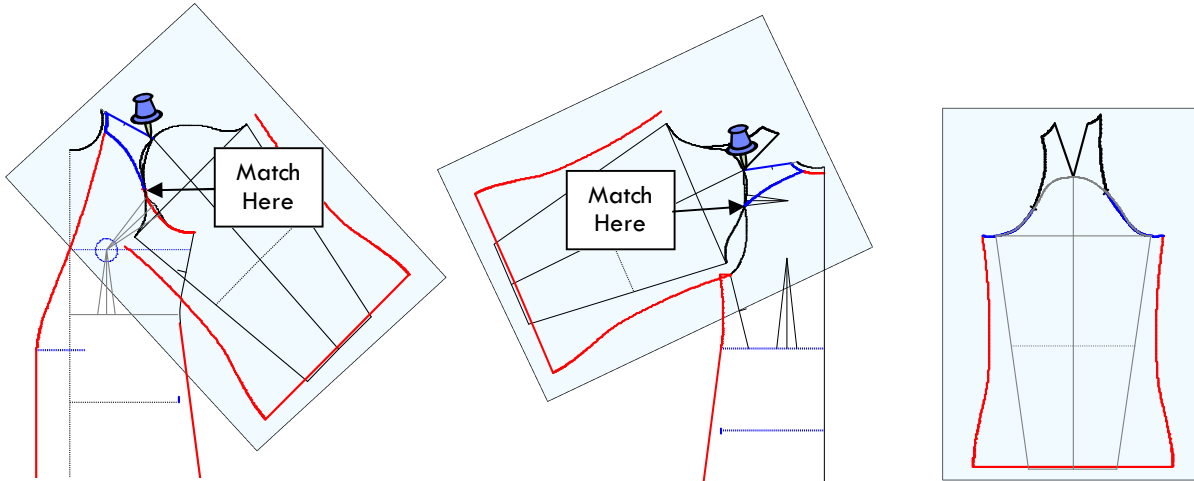
I wanted to see what it was like to add a boa trim. A word of caution, my boa trim sheds like crazy. I don't know if there is a way to prevent this.

For more on the Raglan Sleeve, see page 128 of my book.

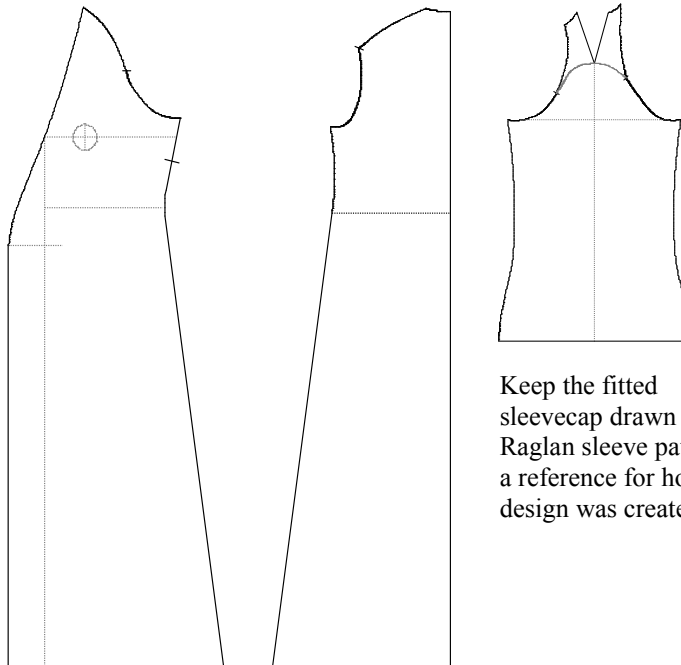


Dressing Gown, cont'd

Creating the Patterns



1. On a fresh sheet of pattern paper copy of the Sleeve Sloper with the design lines.
2. Place the Raglan sleeve pattern on top of the front Sloper pattern that has the design lines for the gown.
3. Match the top of the Sleeve cap to the point of the shoulder and pivot until the Sleeve cap touches the Armscye at the Raglan seam line.
4. Trace the Raglan seam line, top of the neck curve and Shoulder seam.
5. Place the Raglan sleeve pattern on top of the back Sloper pattern.
6. Match the top of the Sleeve cap to the point of the shoulder and pivot until the Sleeve cap touches the Armscye at the Raglan seam line.
7. Trace the Raglan seam line, top of the neck curve and Shoulder seam.
8. Draw in the underarm portion from the Sleeve cap adjusting the length as necessary to match the front and back patterns of the Dressing Gown.
9. Trace the patterns for the front and back of the Dressing Gown following the design lines.



Keep the fitted sleeve cap drawn on the Raglan sleeve pattern as a reference for how the design was created.

The Finished Patterns

Dressing Gown, cont'd

Sewing the Dressing Gown

There are a variety of ways the Dressing Gown can be sewn. I used French seams because I was working with a transparent chiffon. I reinforced the edges where the boa is applied with bias tape.

1. Add 1/2" (12mm) seam allowances to all seams. Leave the Center Back line as a fold.
2. Cut the fabric using the patterns.
3. Pin the sleeve darts, wrong side together, then sew.
4. Pin the sleeve to the front of the body and the back, wrong sides together, then sew the.
5. Pin the underarm and side seams, wrong sides together, then sew.
6. Trim all seam allowances close to the stitching.
7. Turn the garment, right sides together, then sew all seams to finish French seams.
8. Sew bias tape to all outside edges.
9. Hand whip the boa trim to the bias tape edges.